

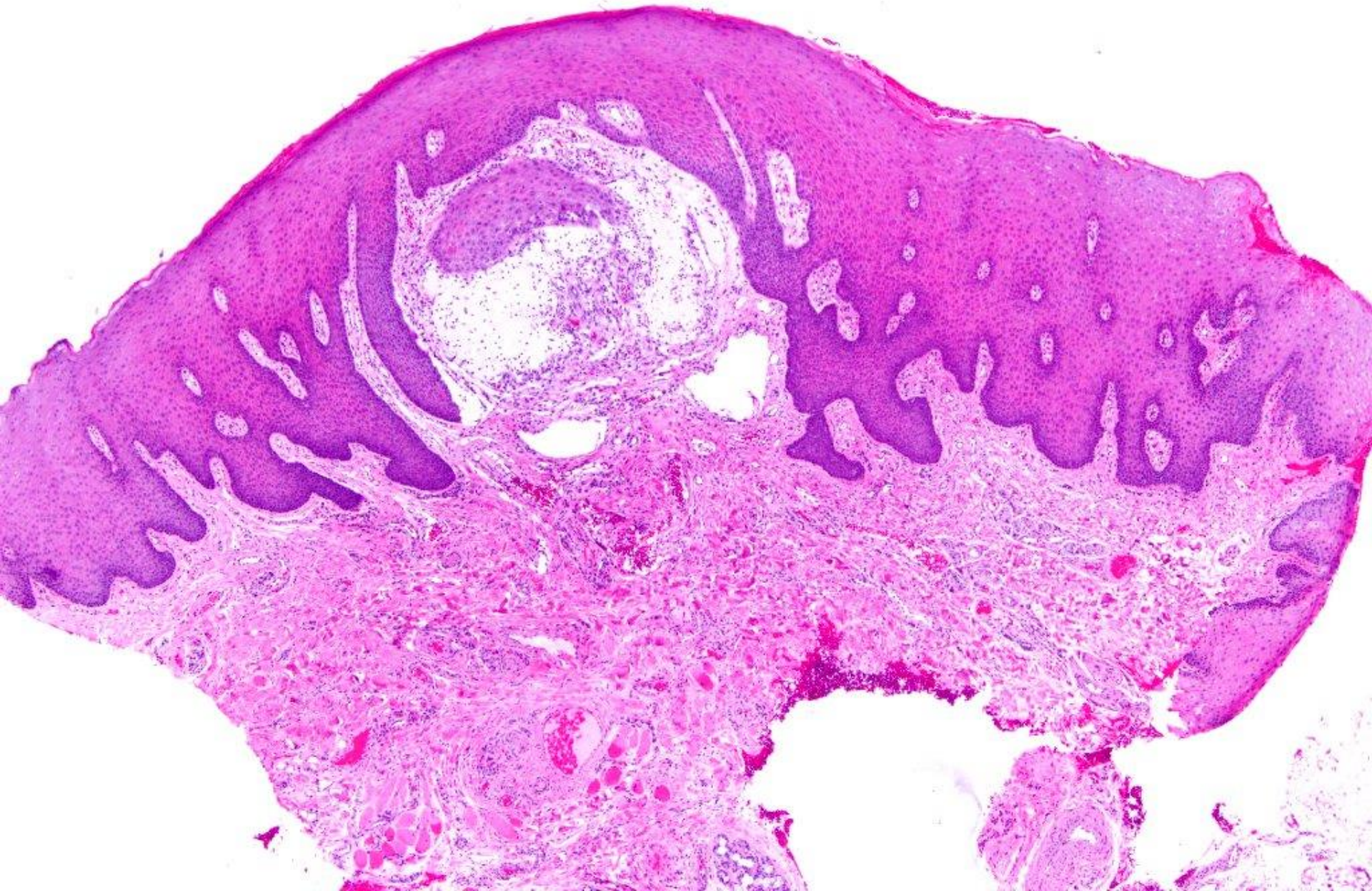
Oral Histopathology

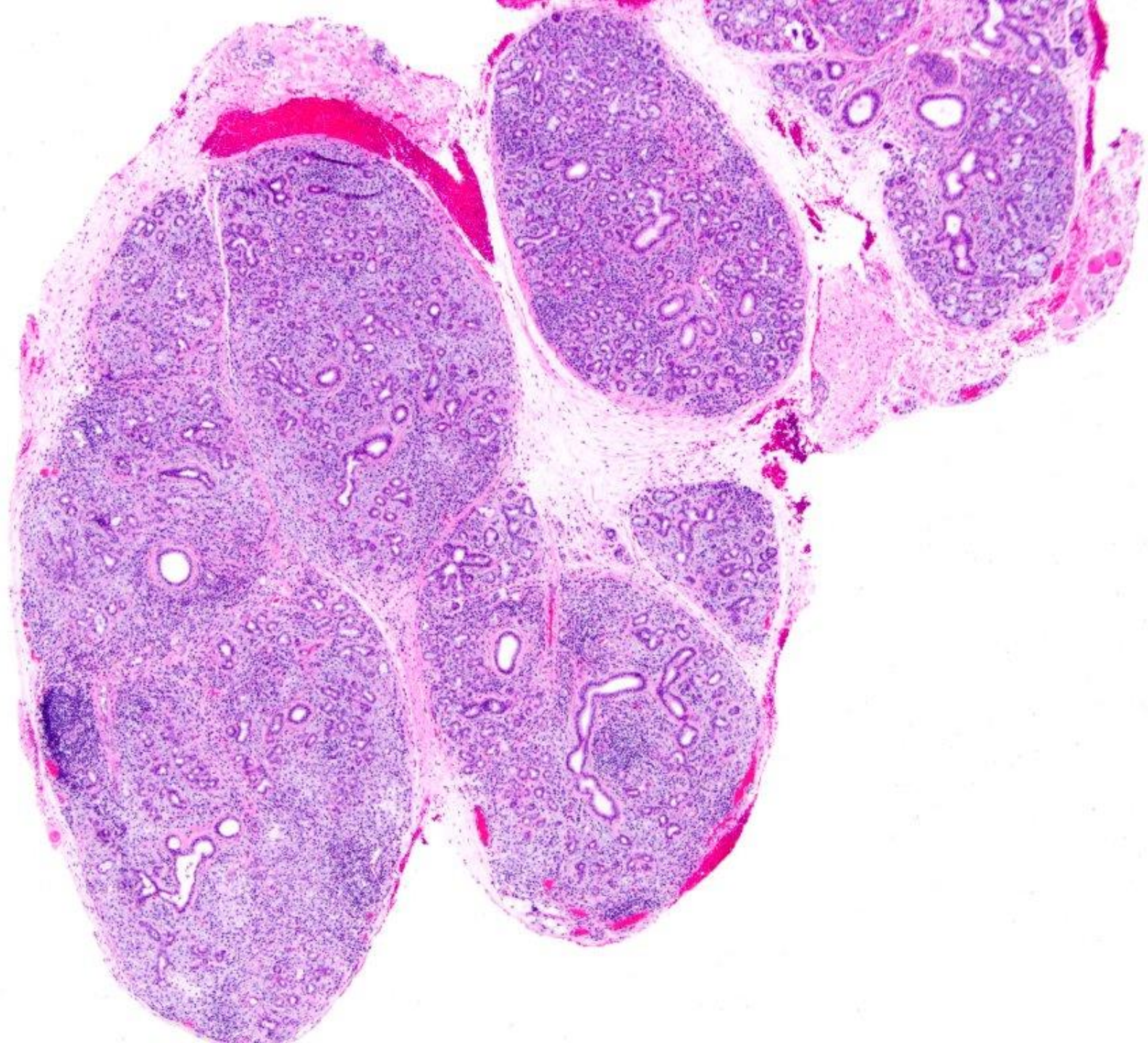
Series 7

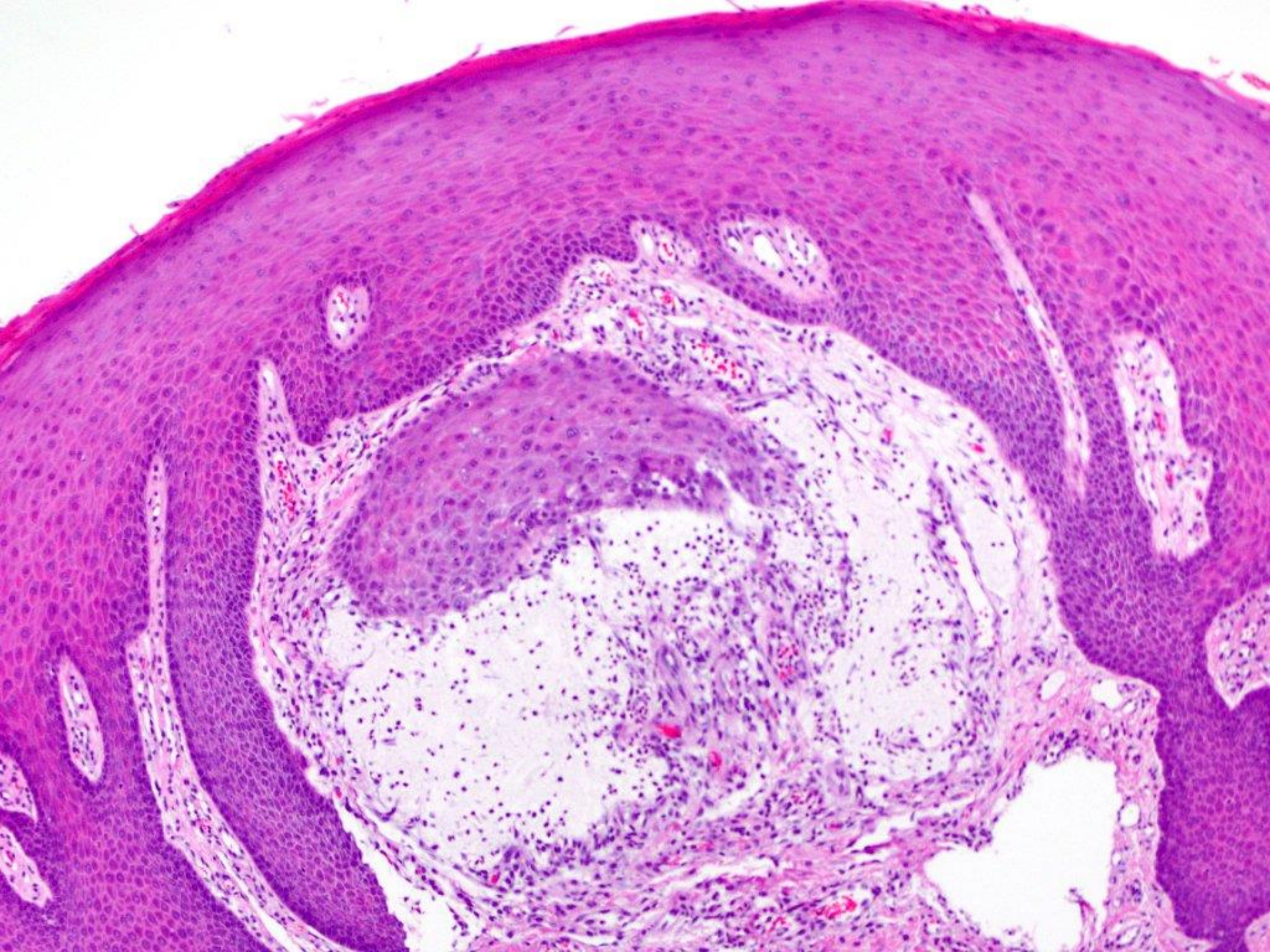
DAVID E. KLINGMAN, DMD

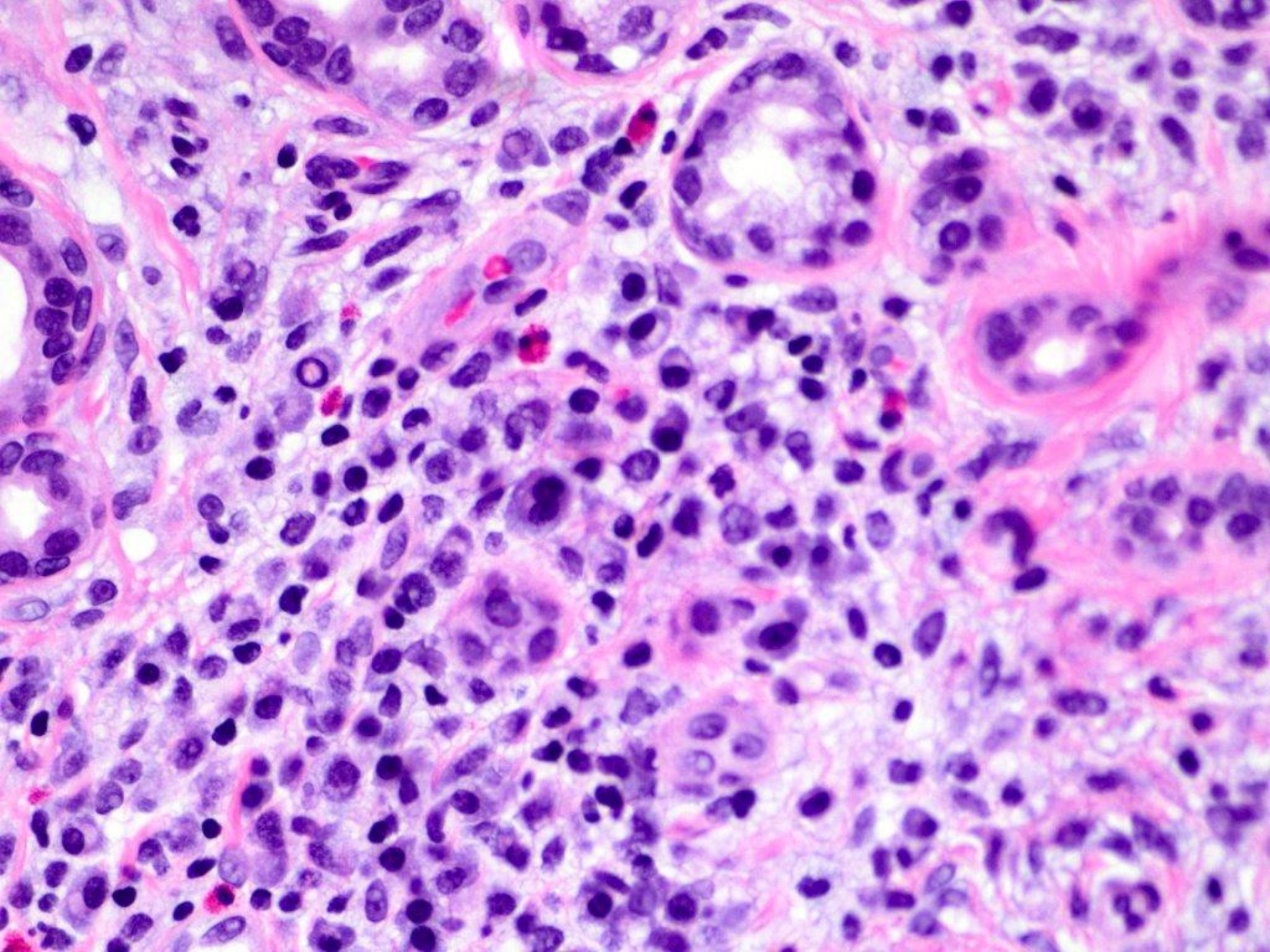
Diplomate, American Board of Oral and Maxillofacial Pathology

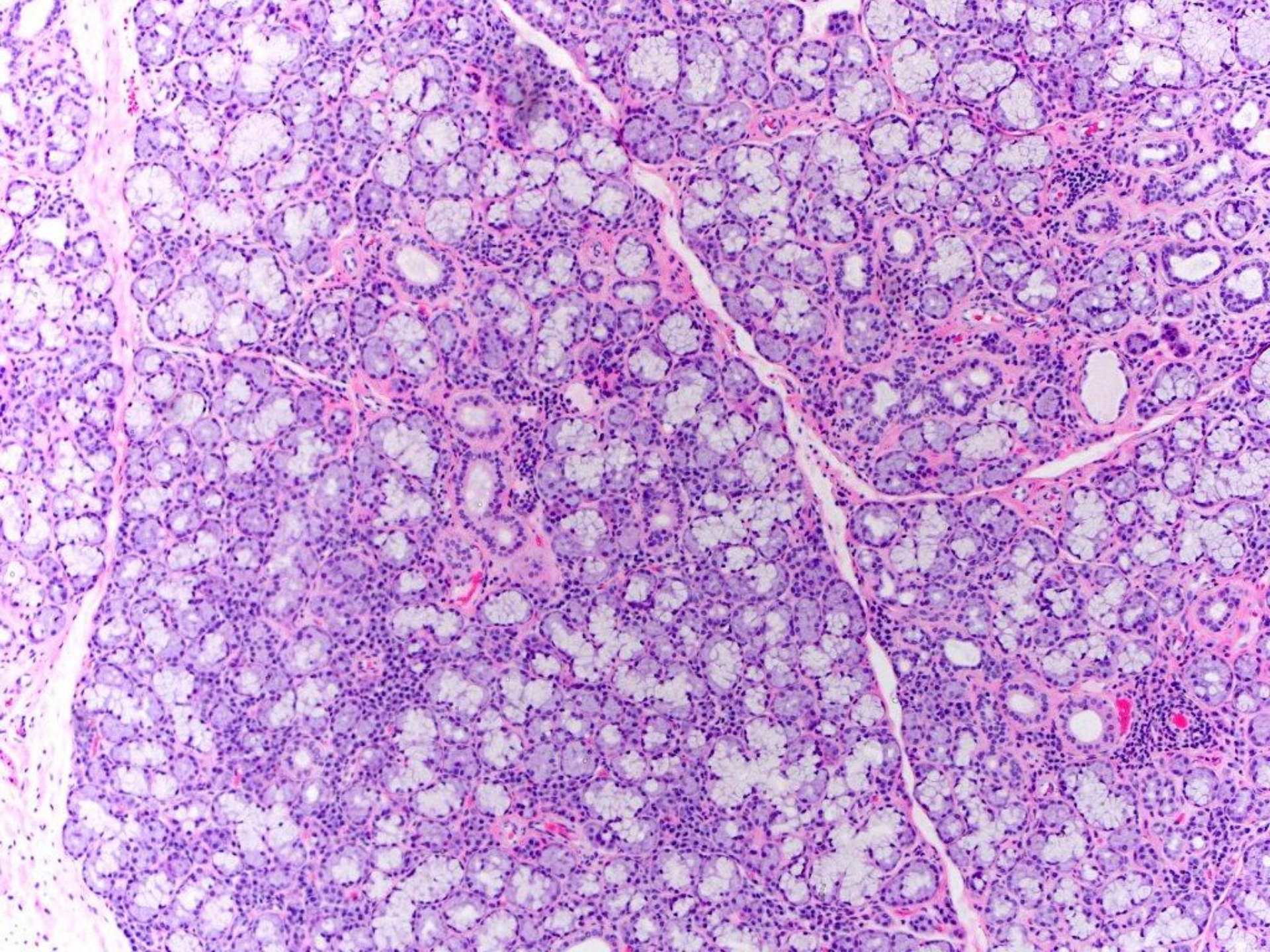
Diplomate, American Board of General Dentistry

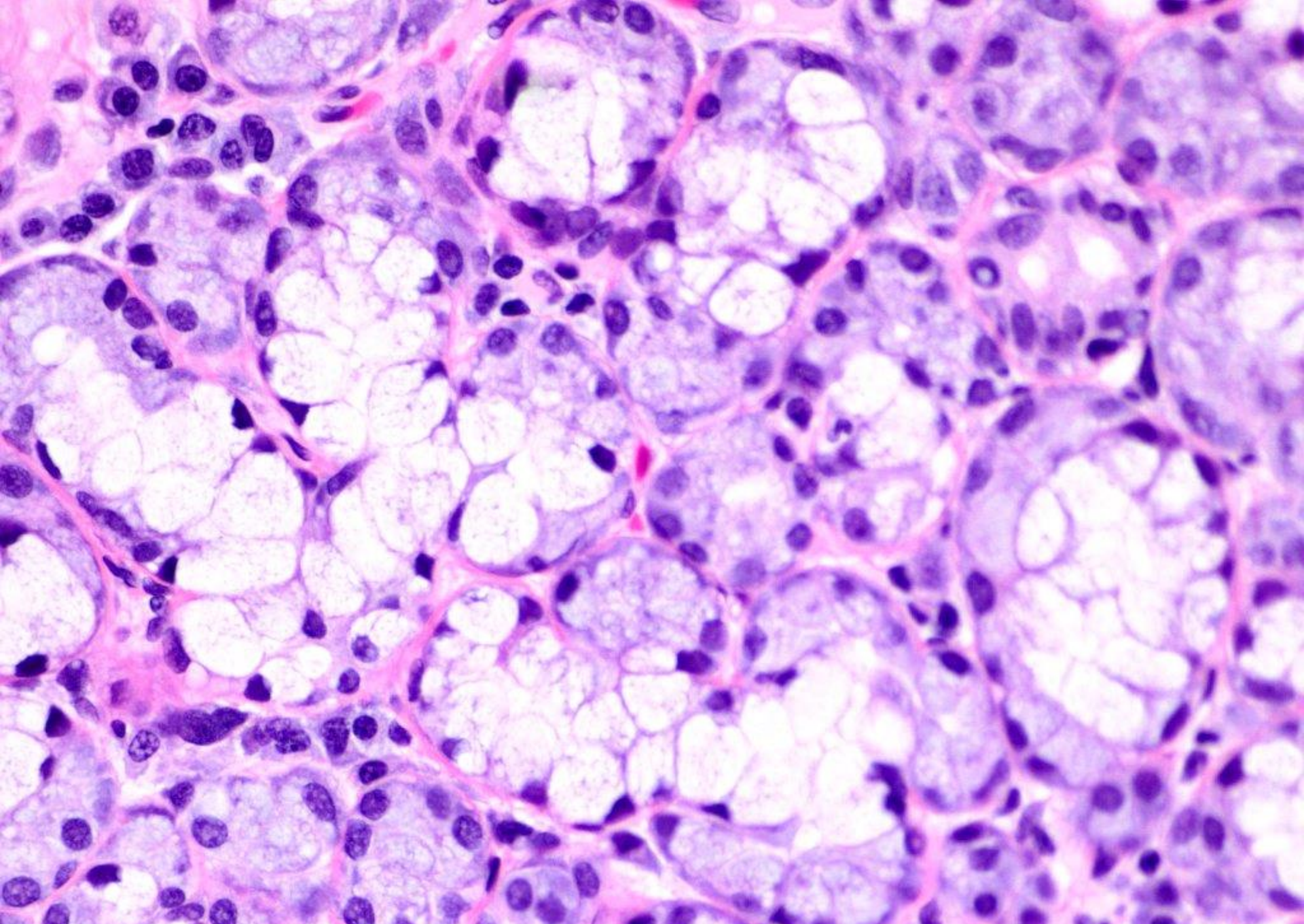




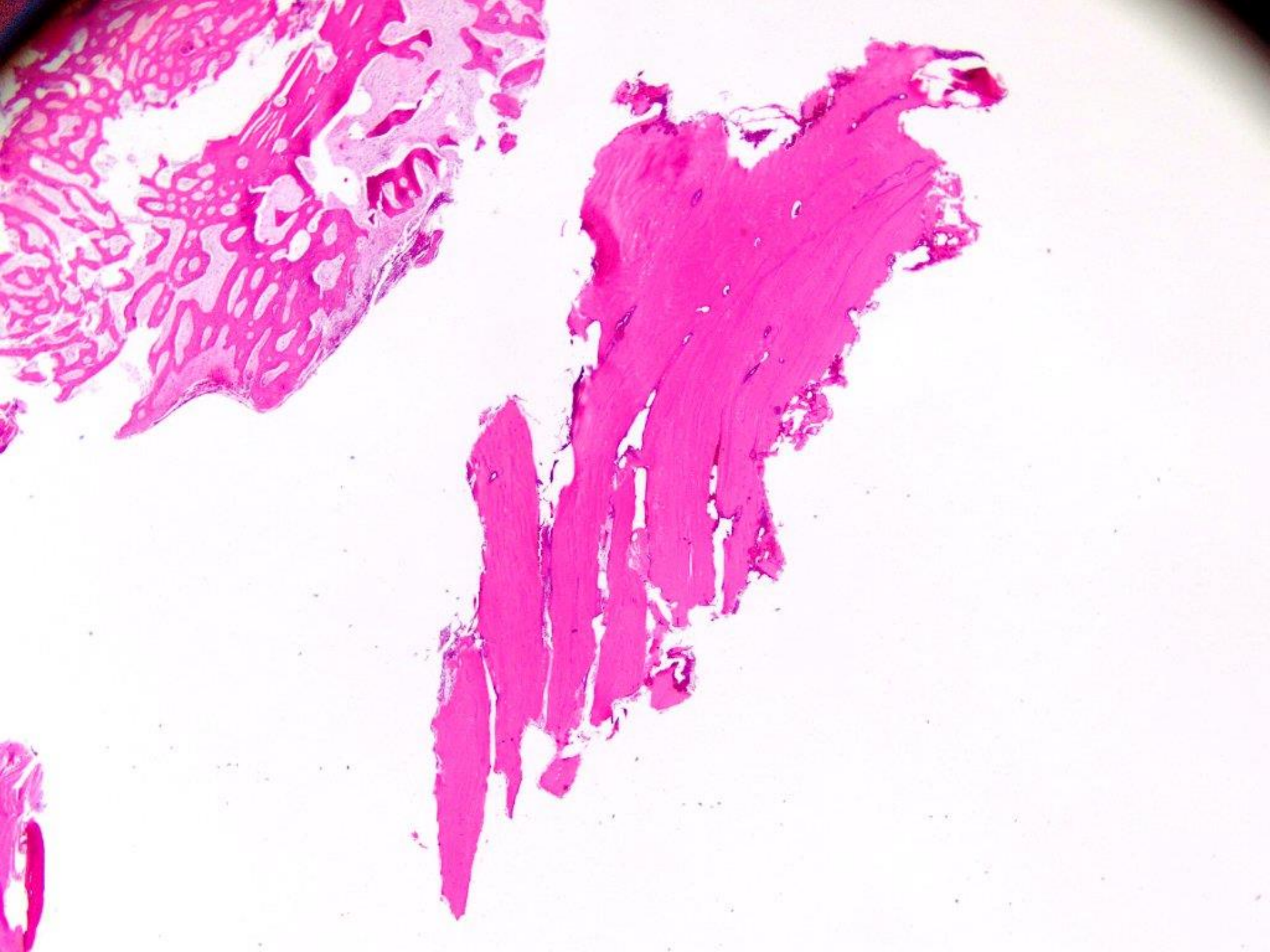


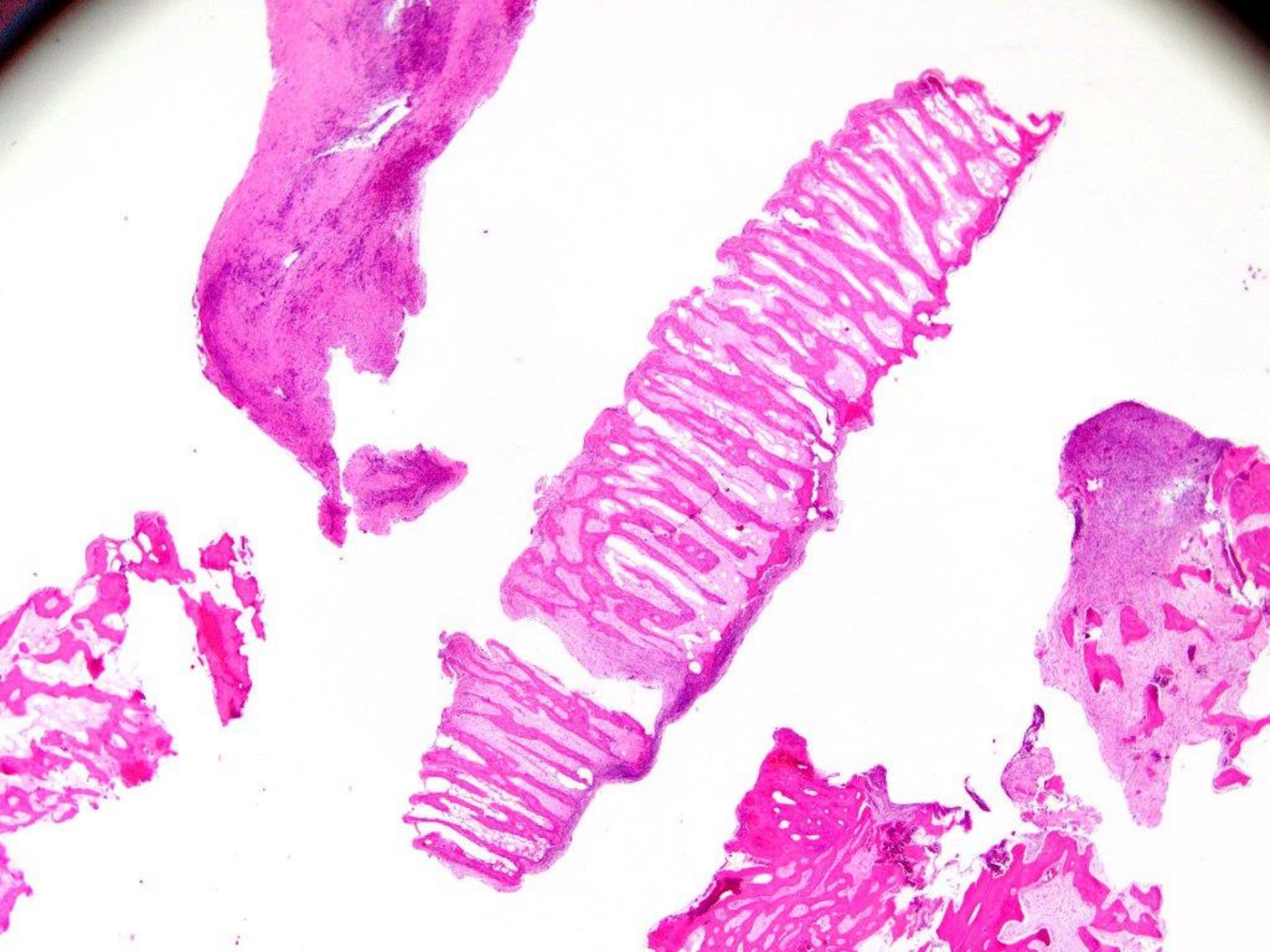


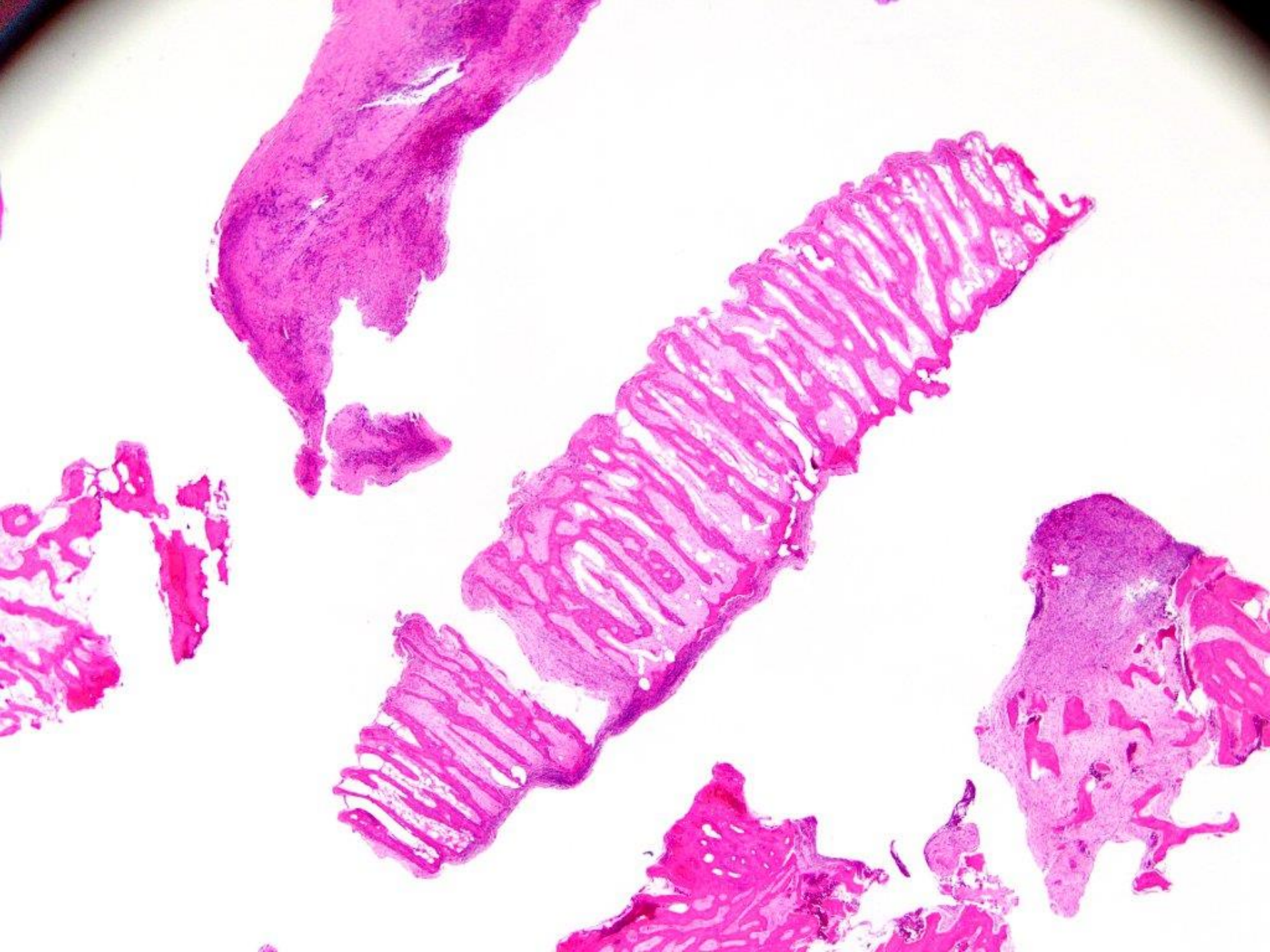


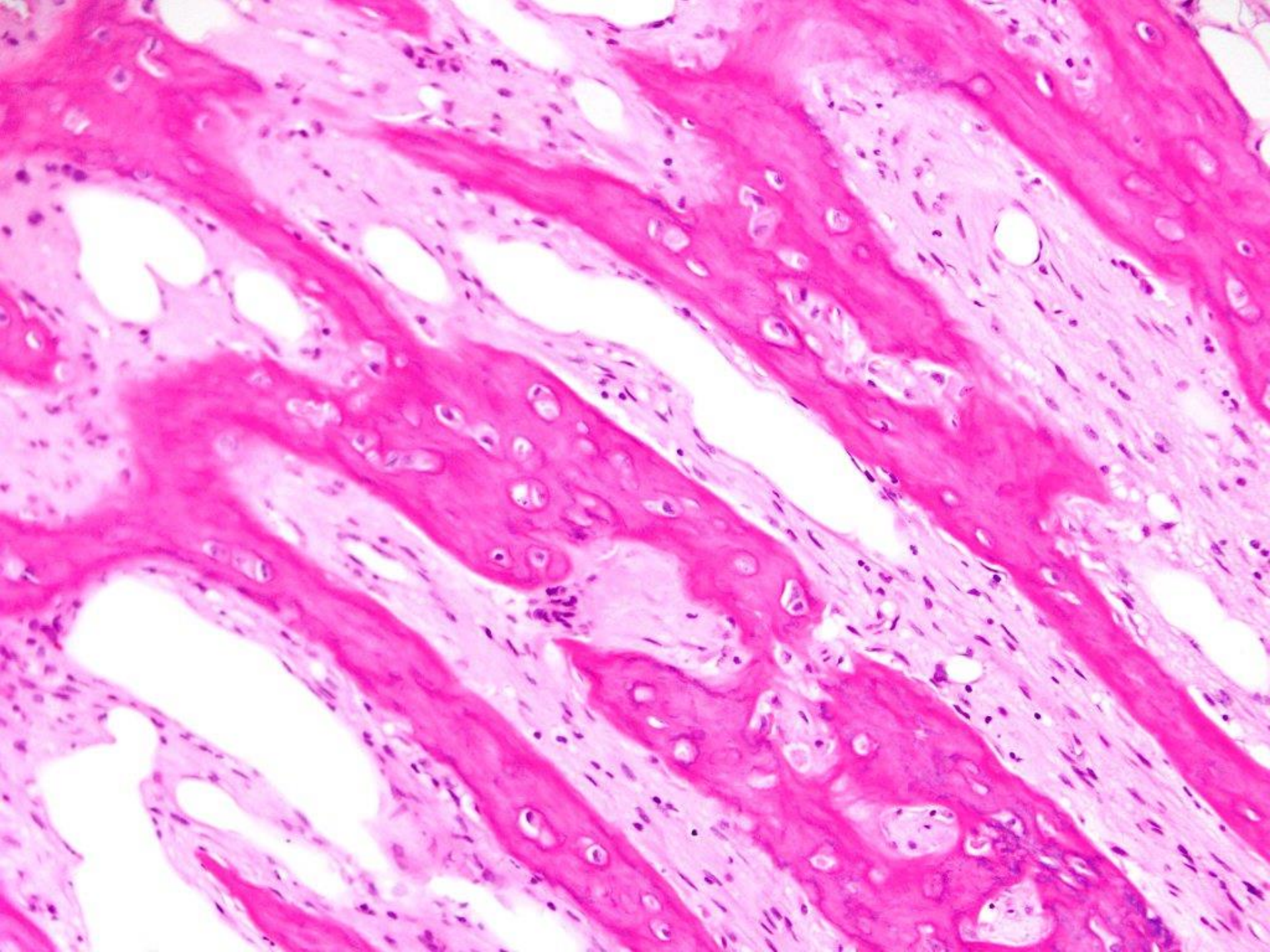


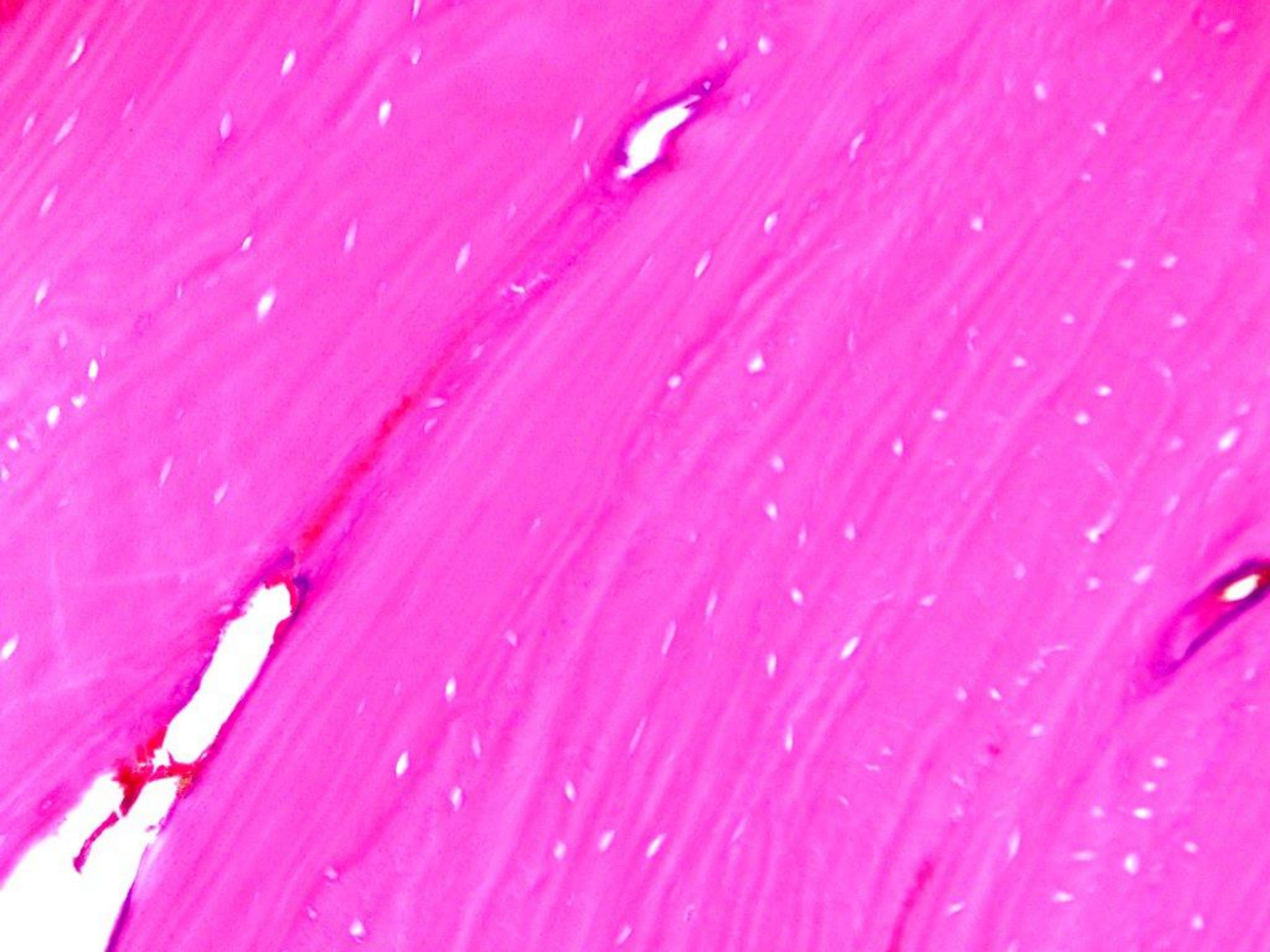
superficial mucocele, sclerosing sialoadenitis, and normal minor salivary glands

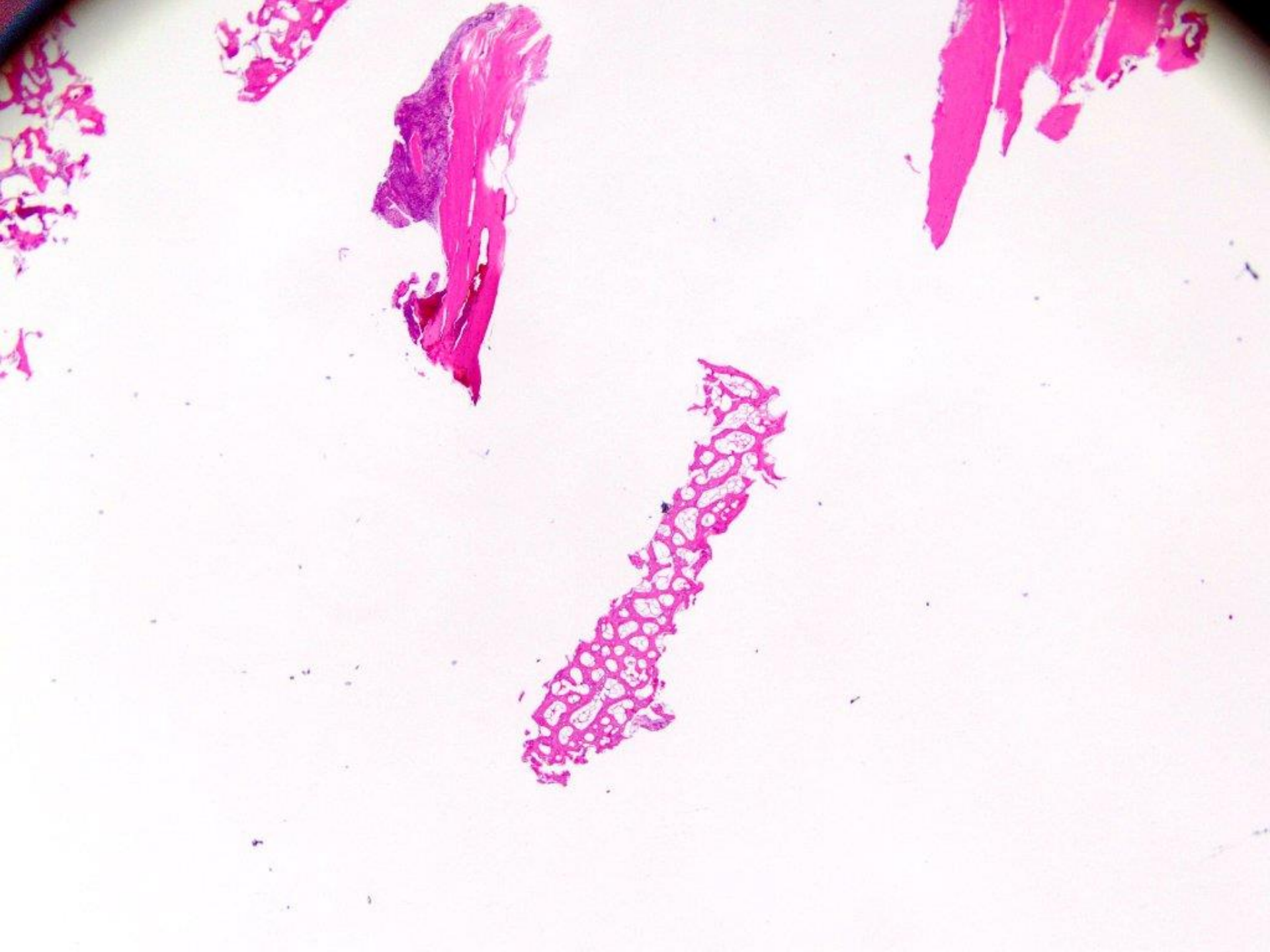


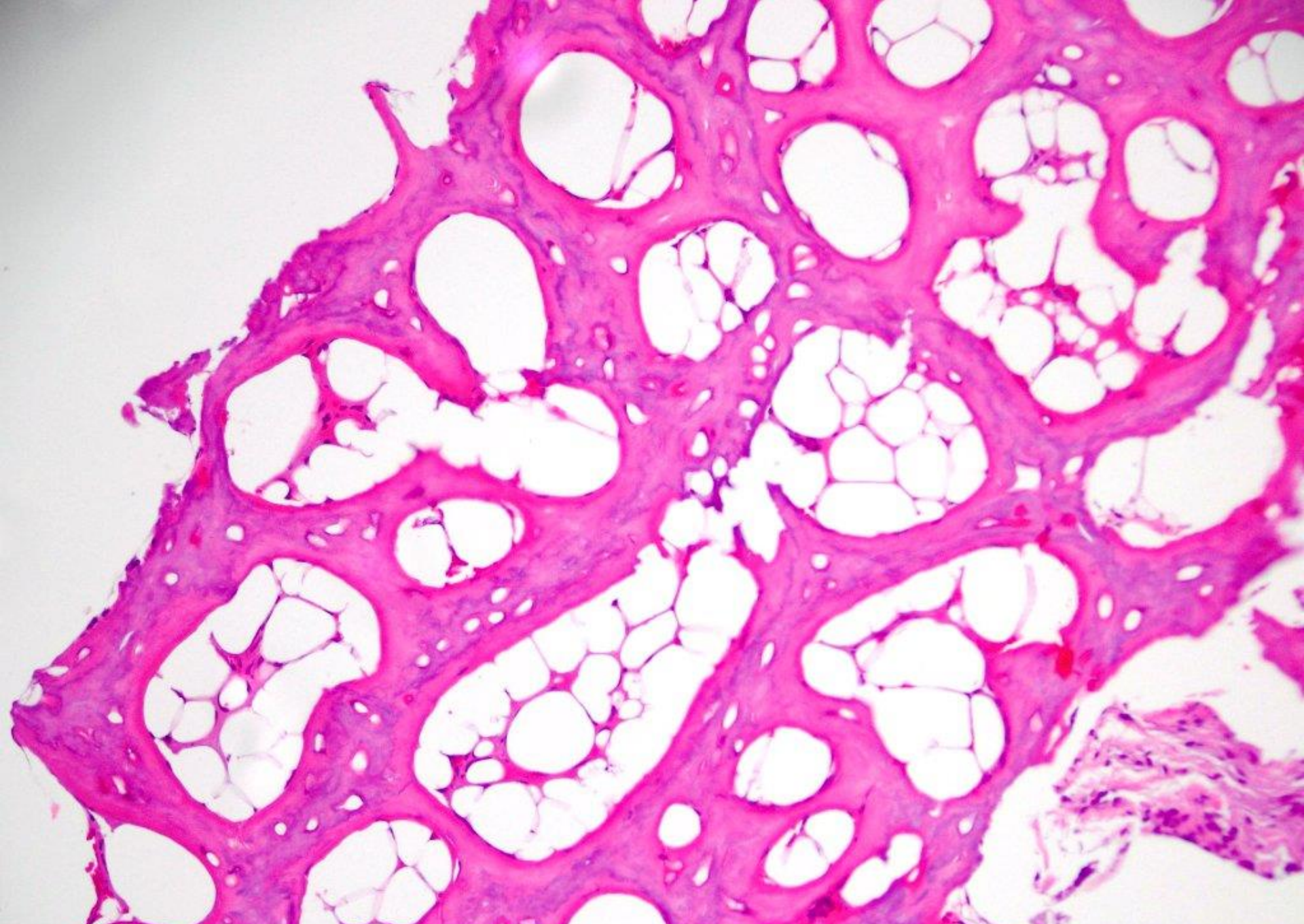




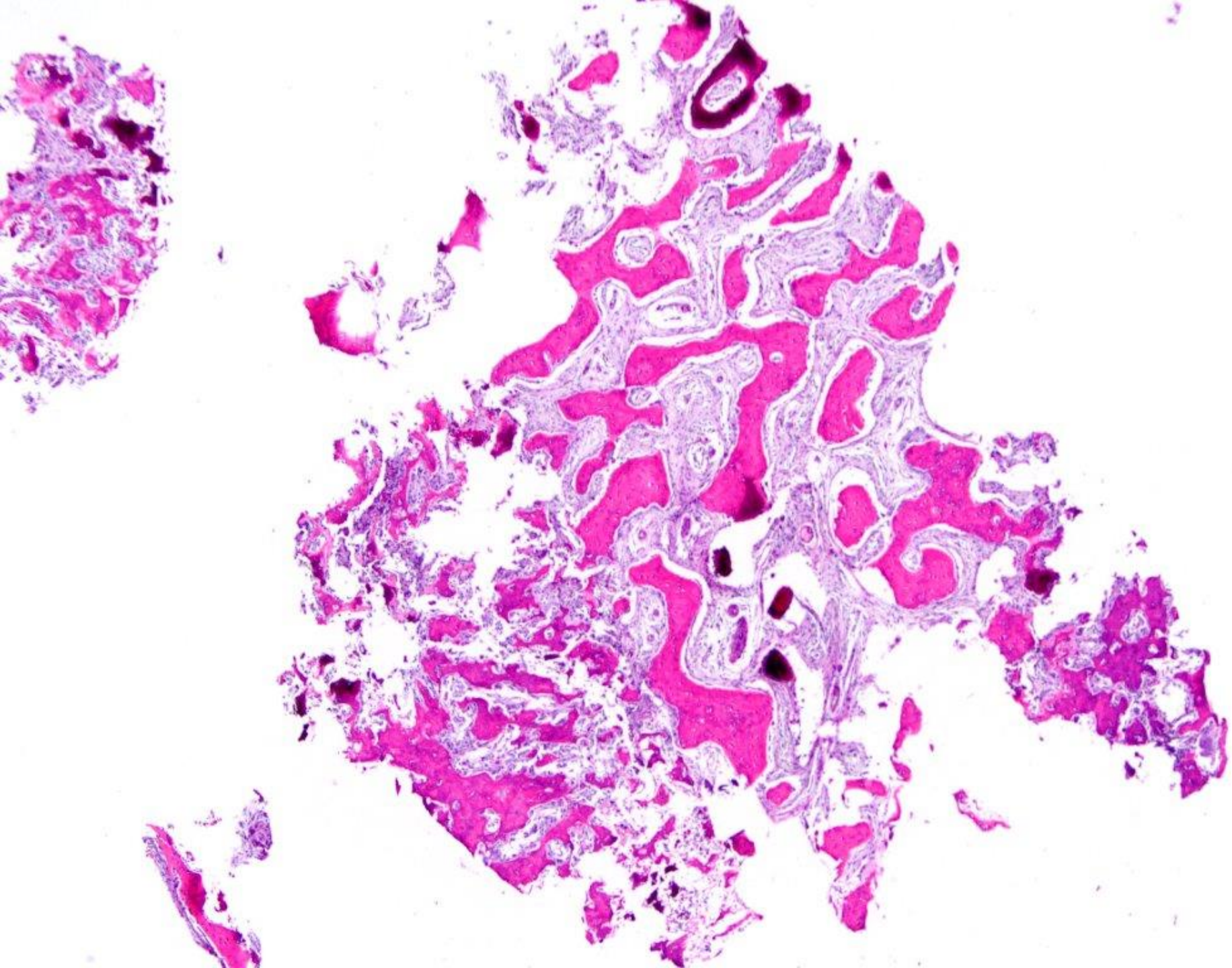


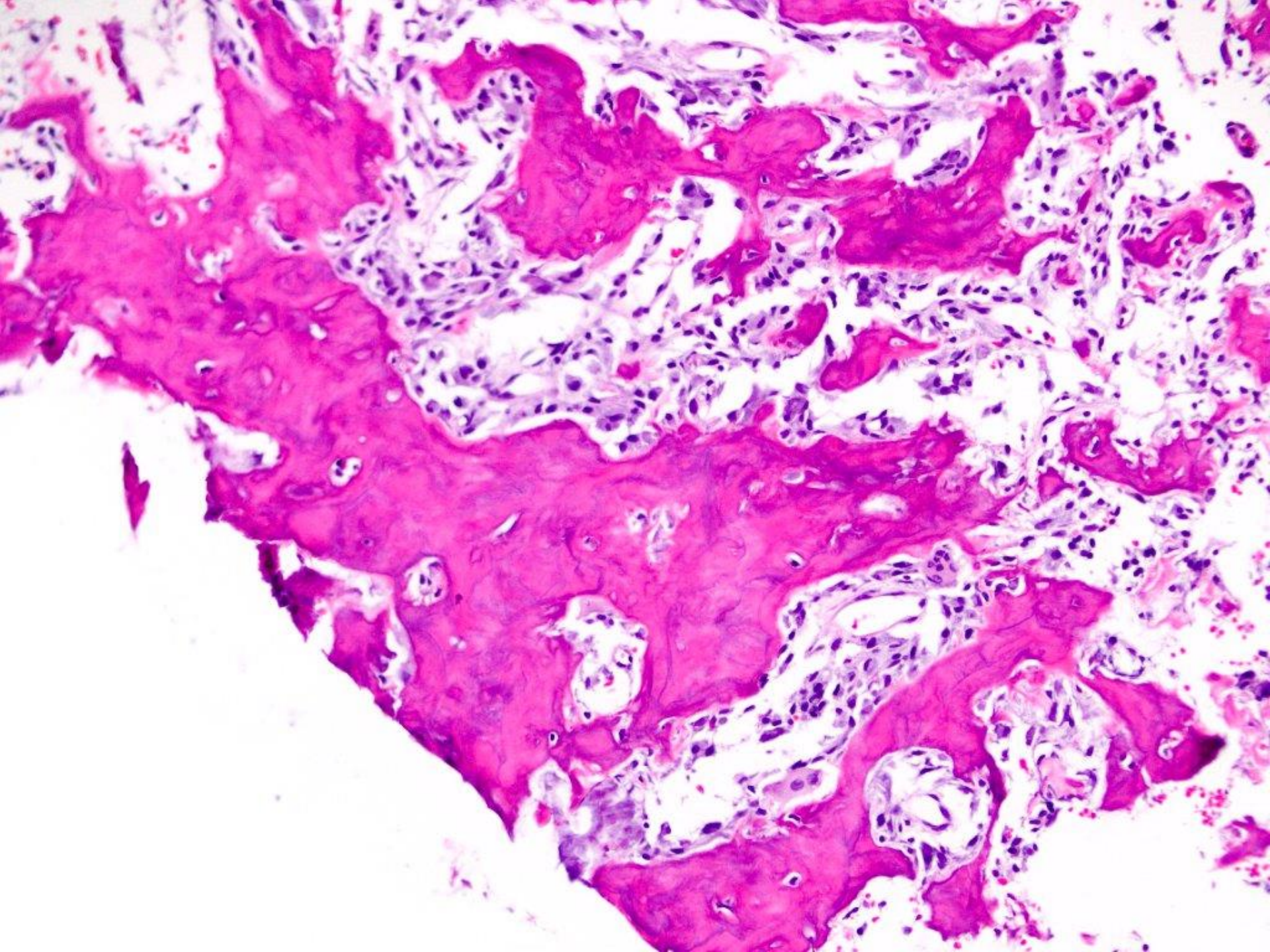


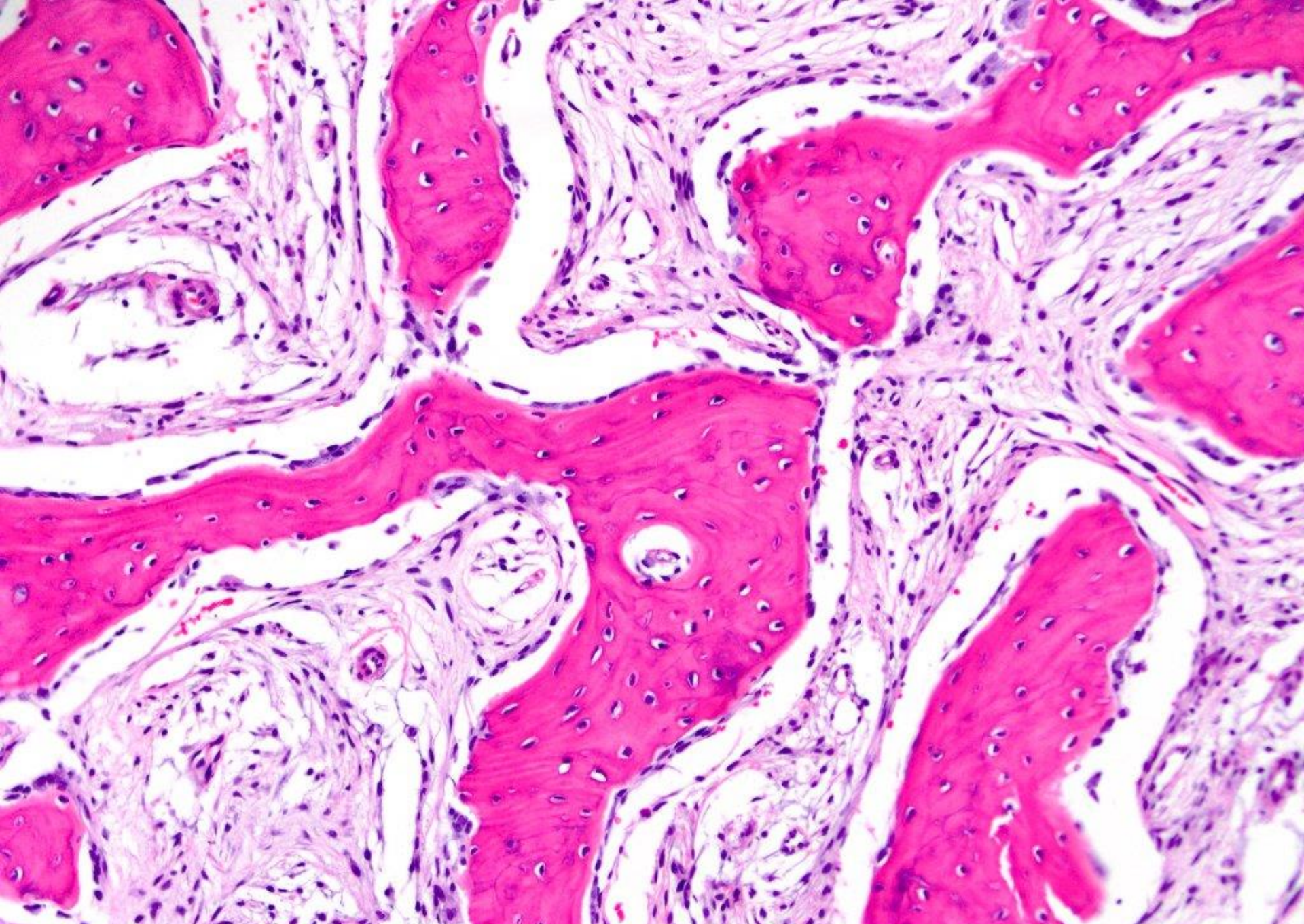




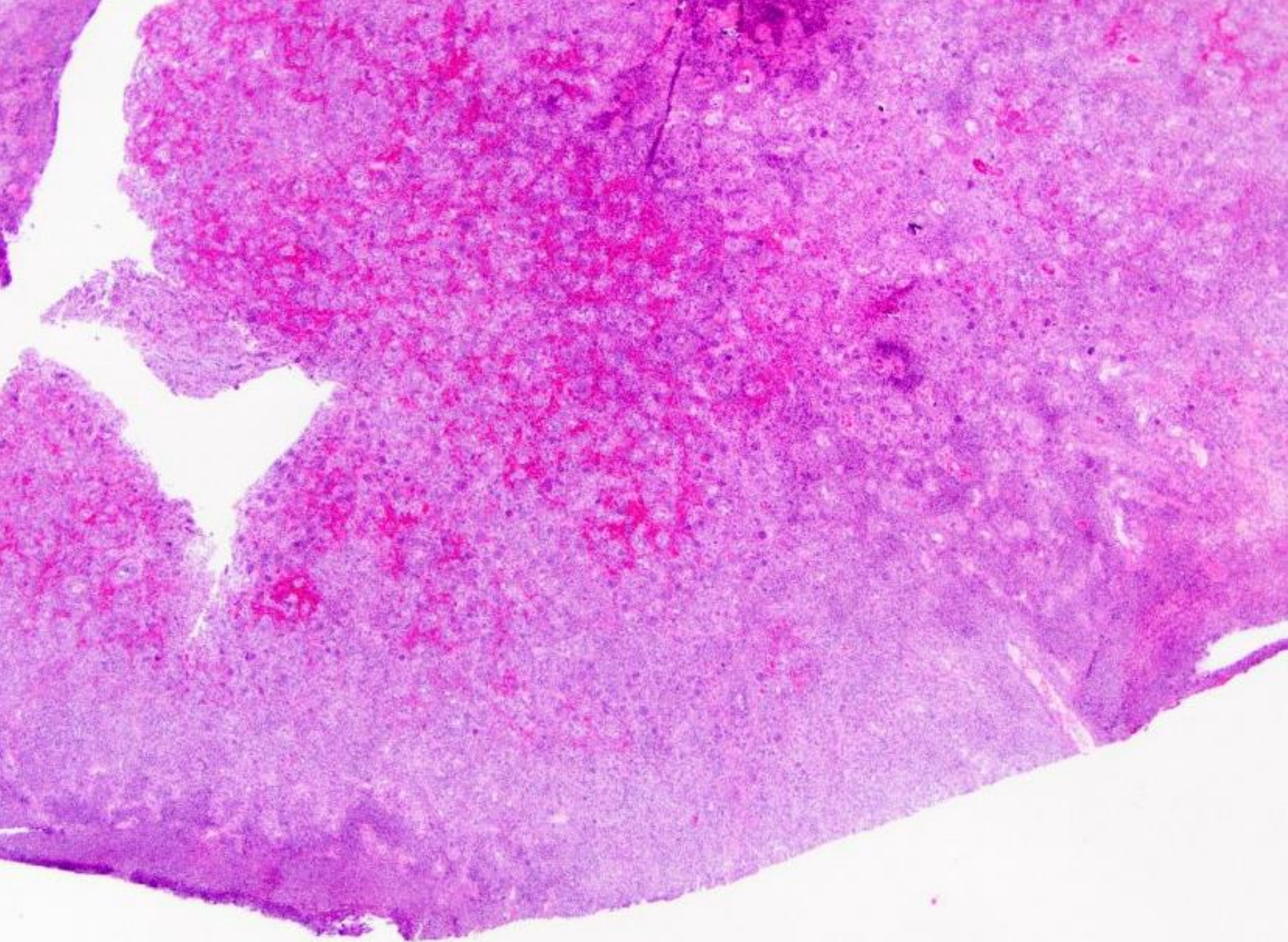
sequestrum and reactive and necrotic bone

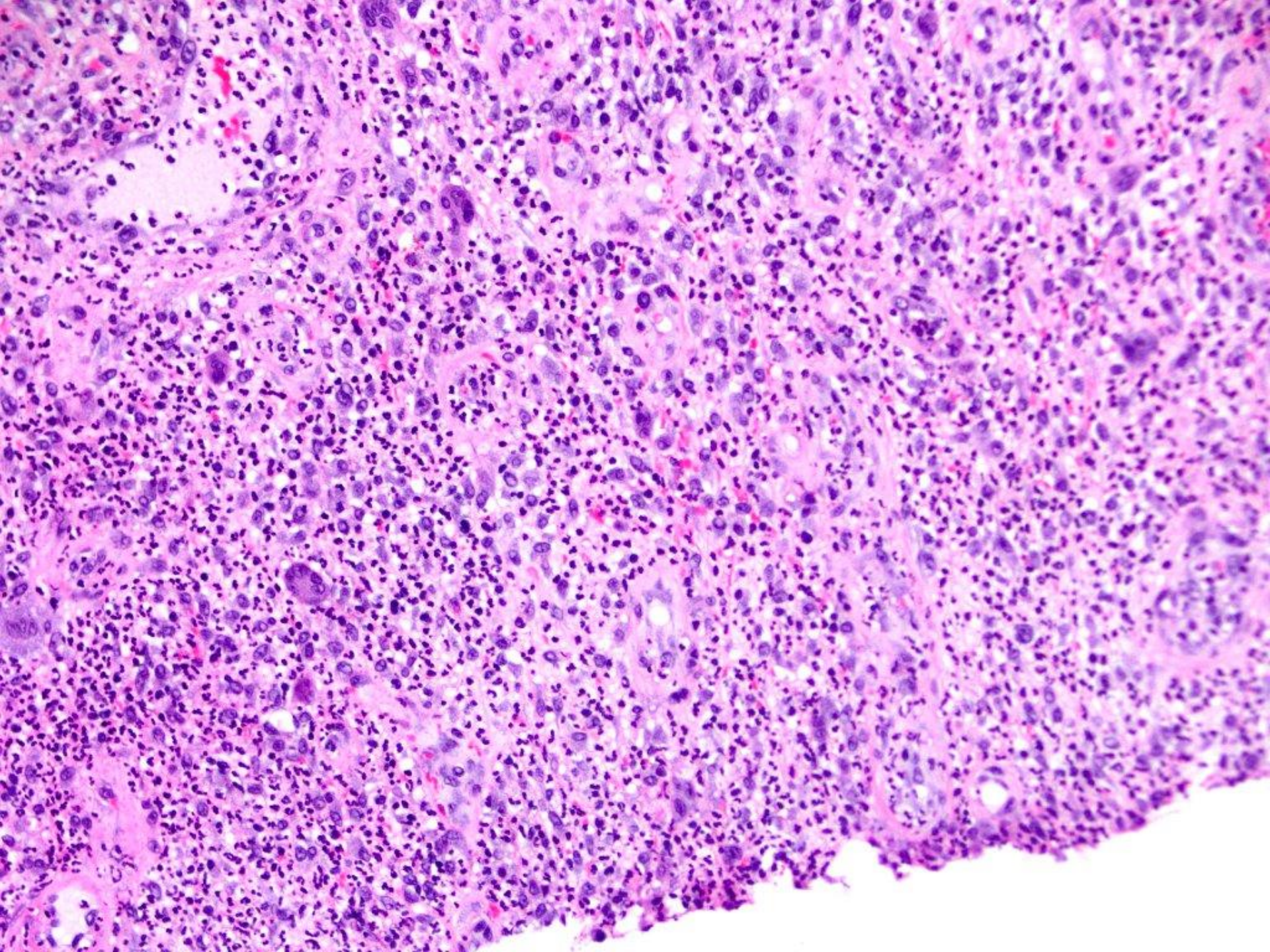


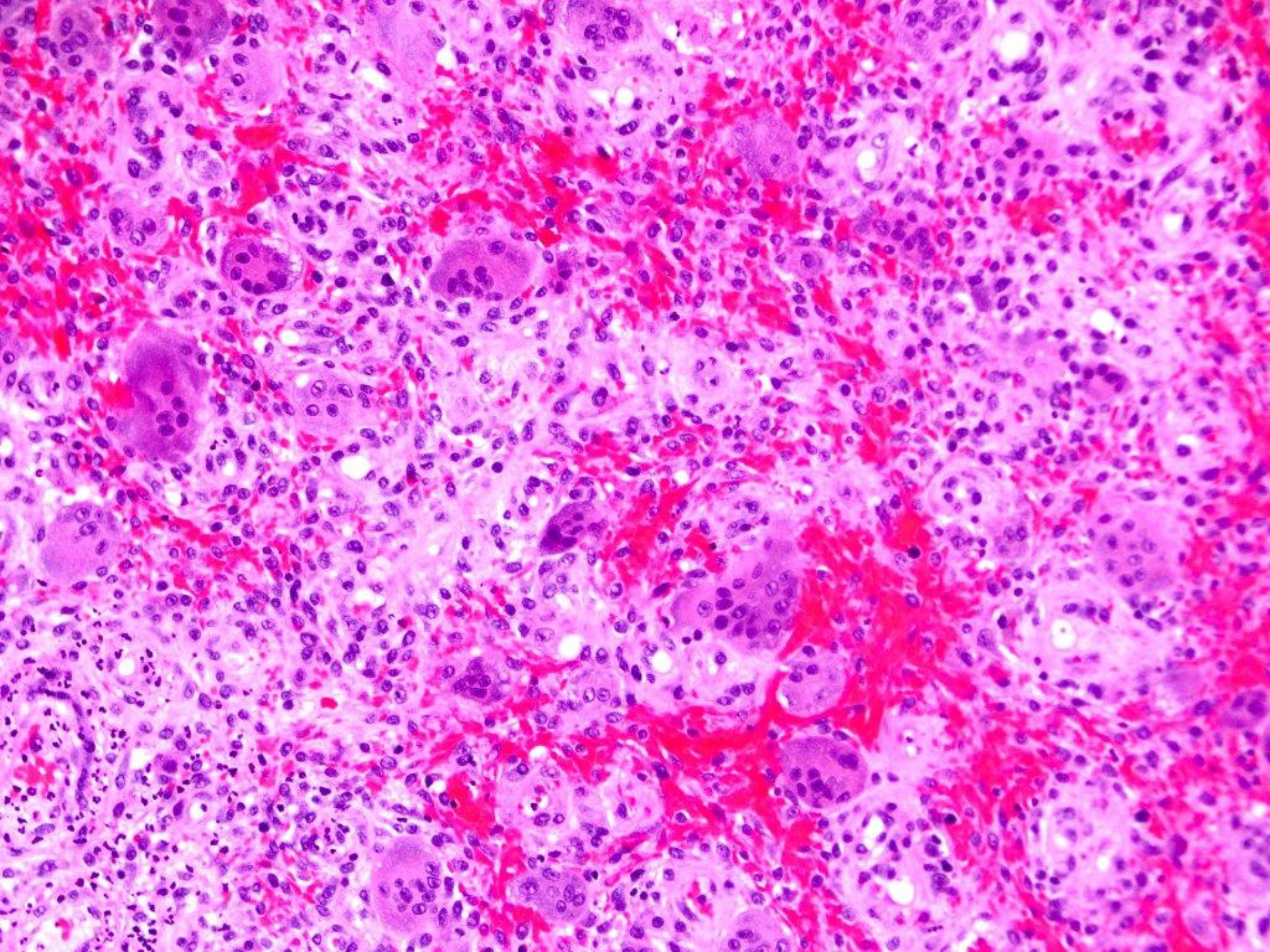


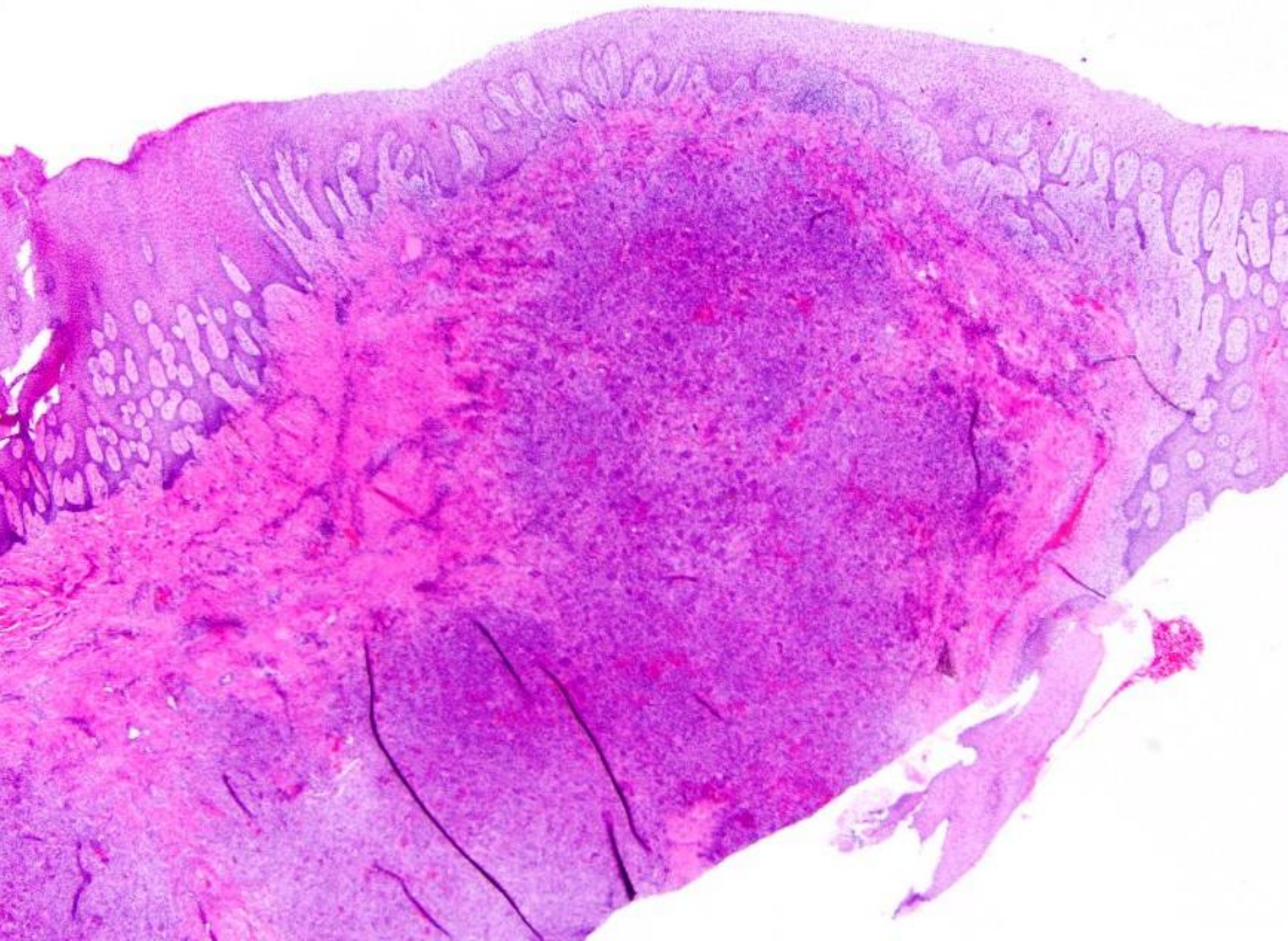


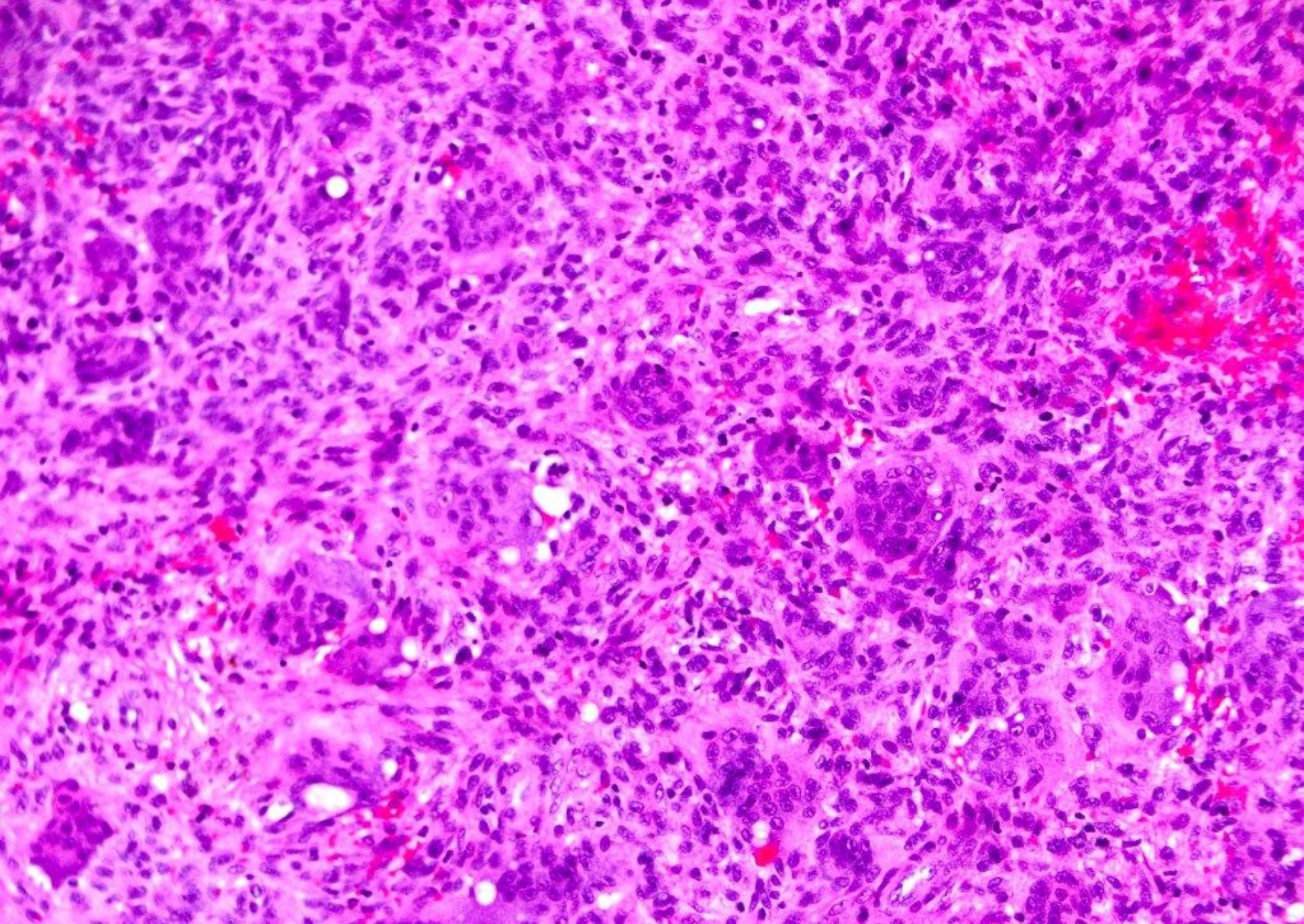
c/w osteoid osteoma and reactive bone (clinically described as painful)



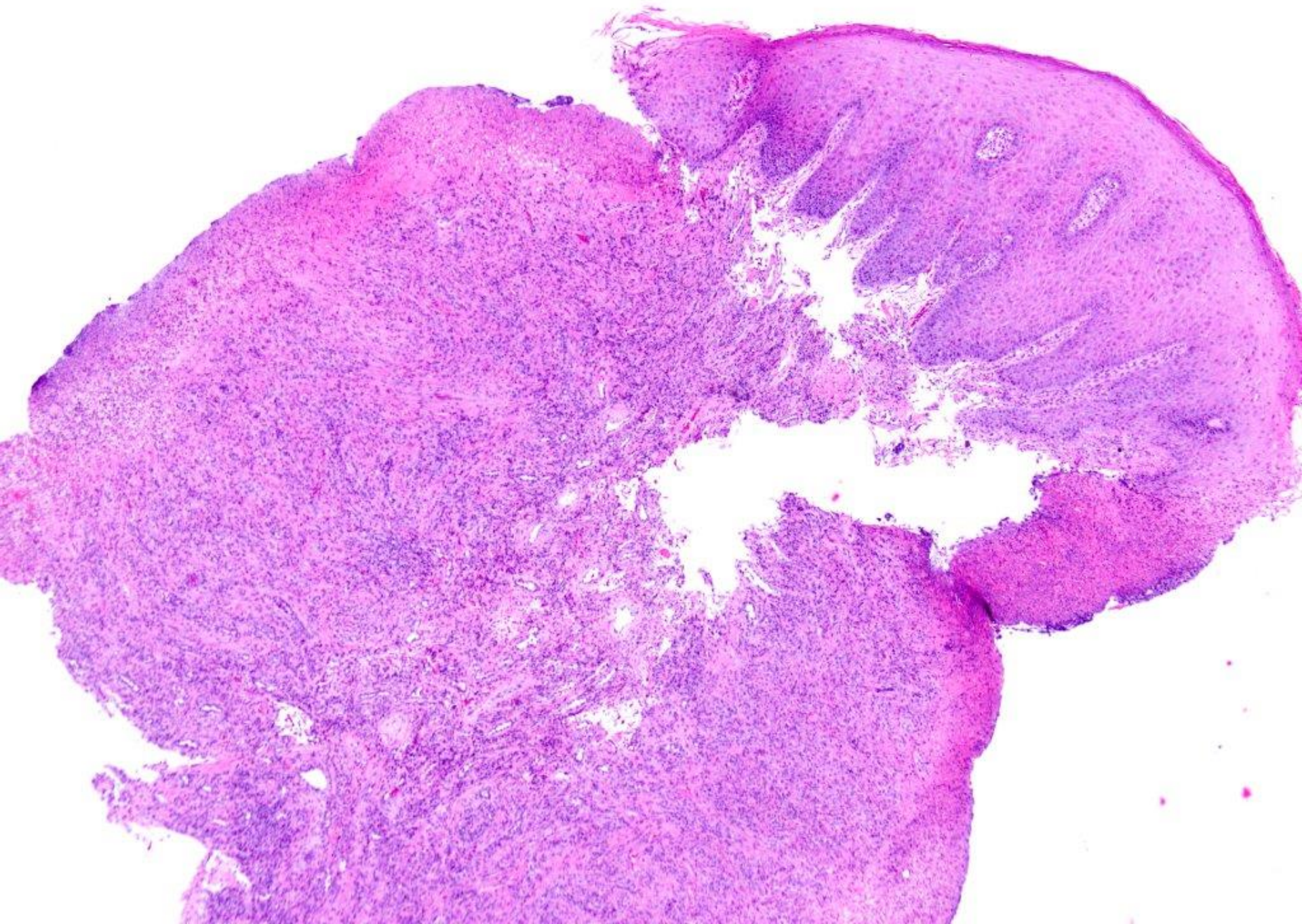


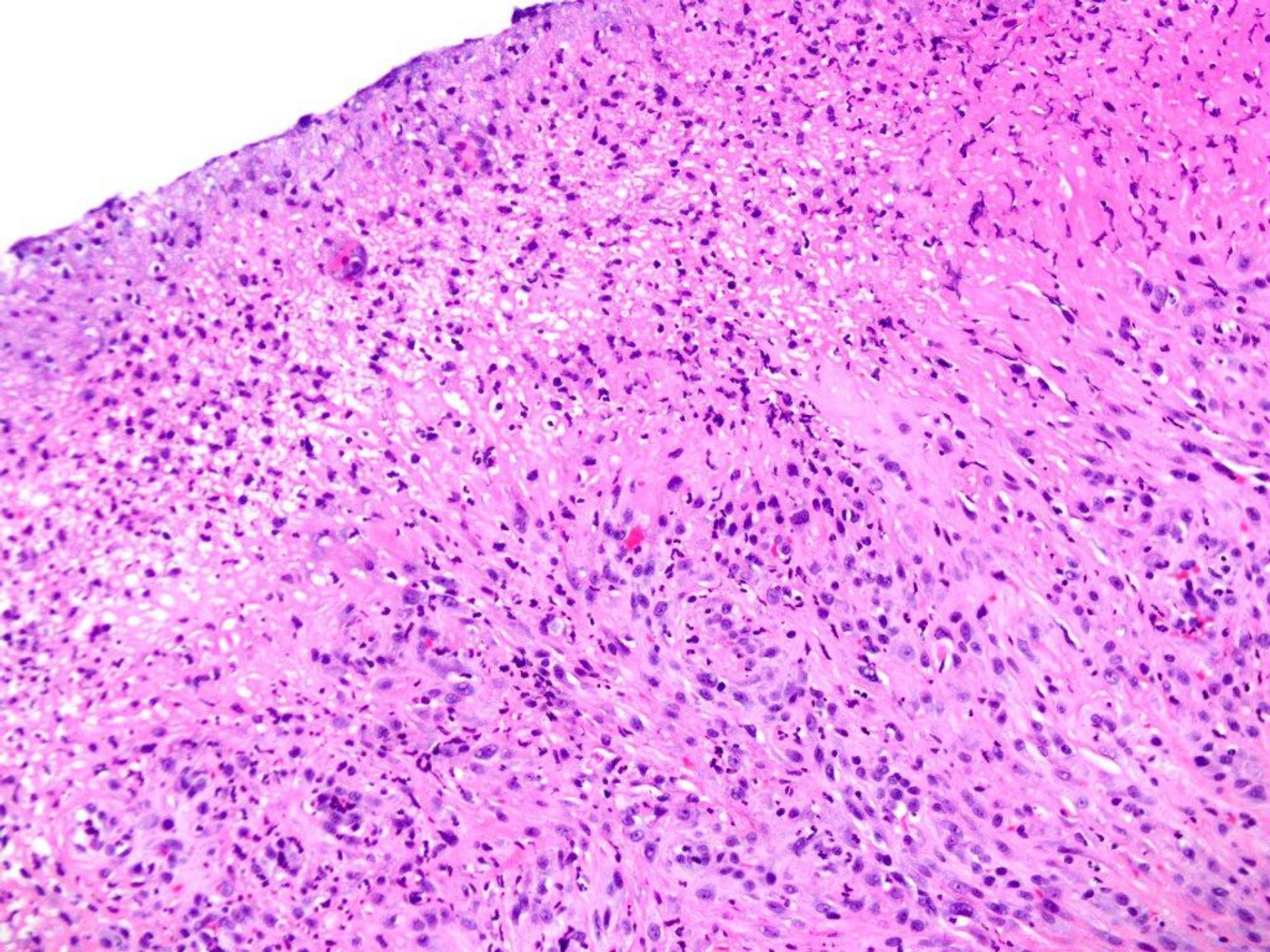


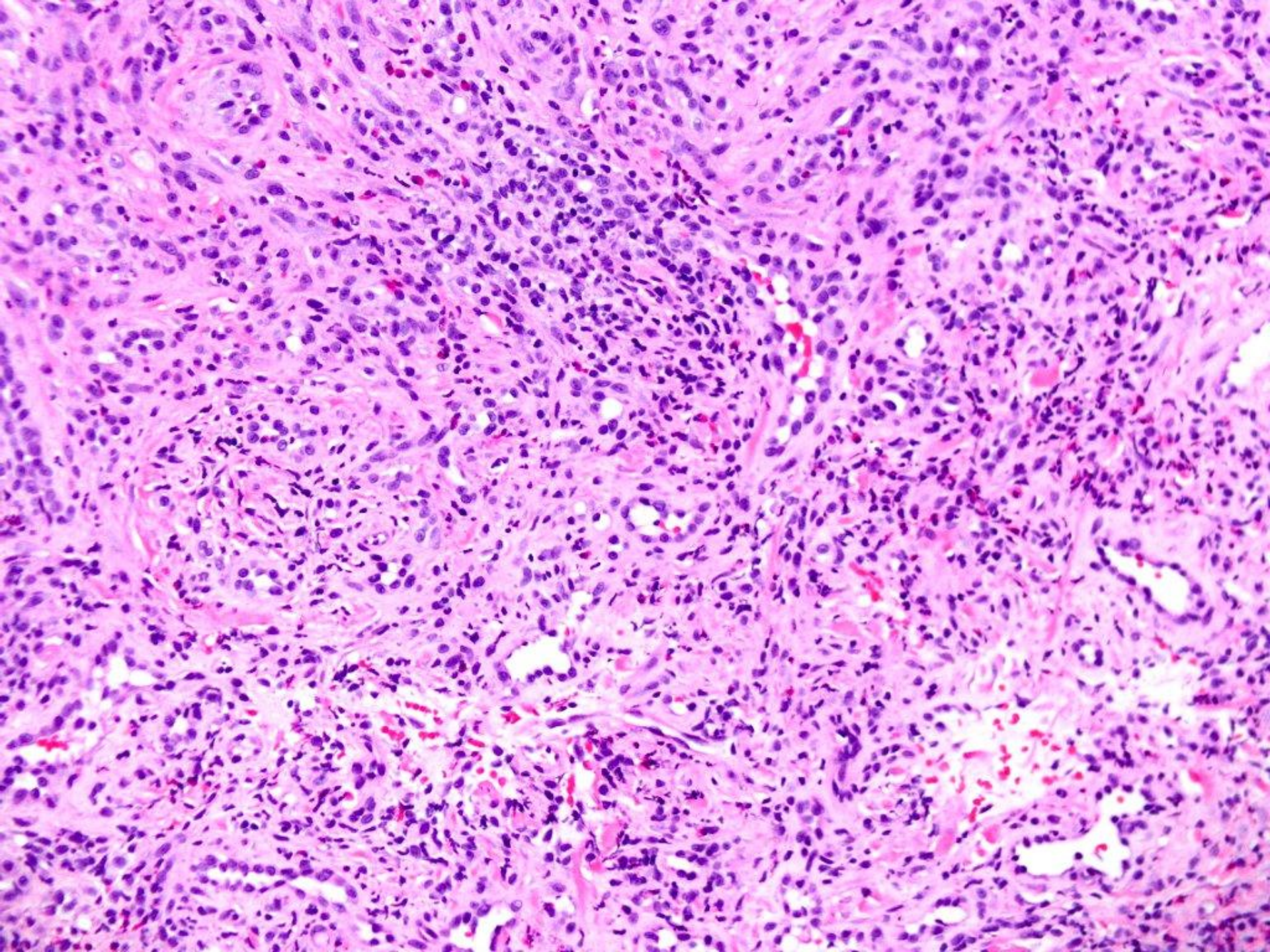


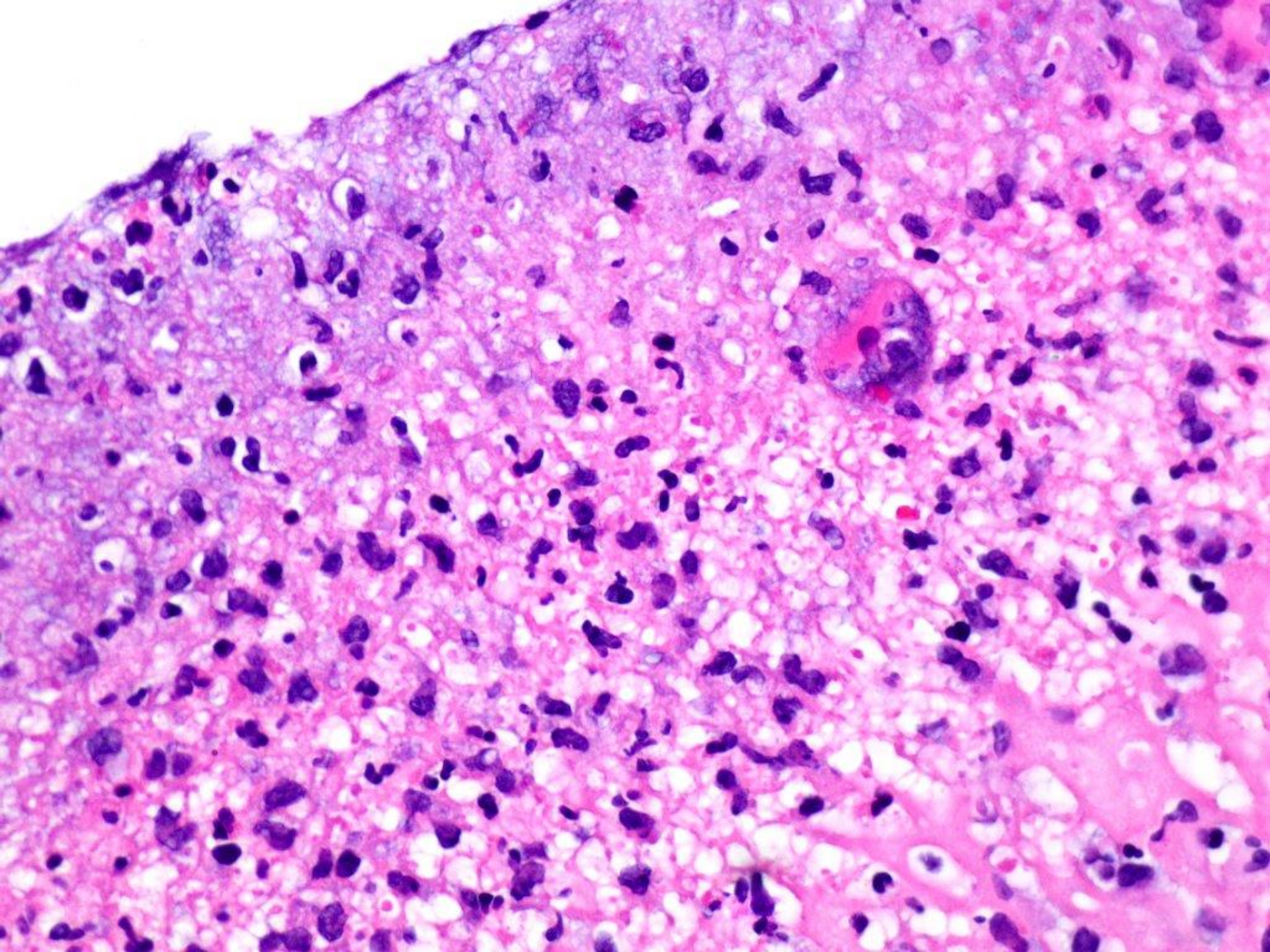


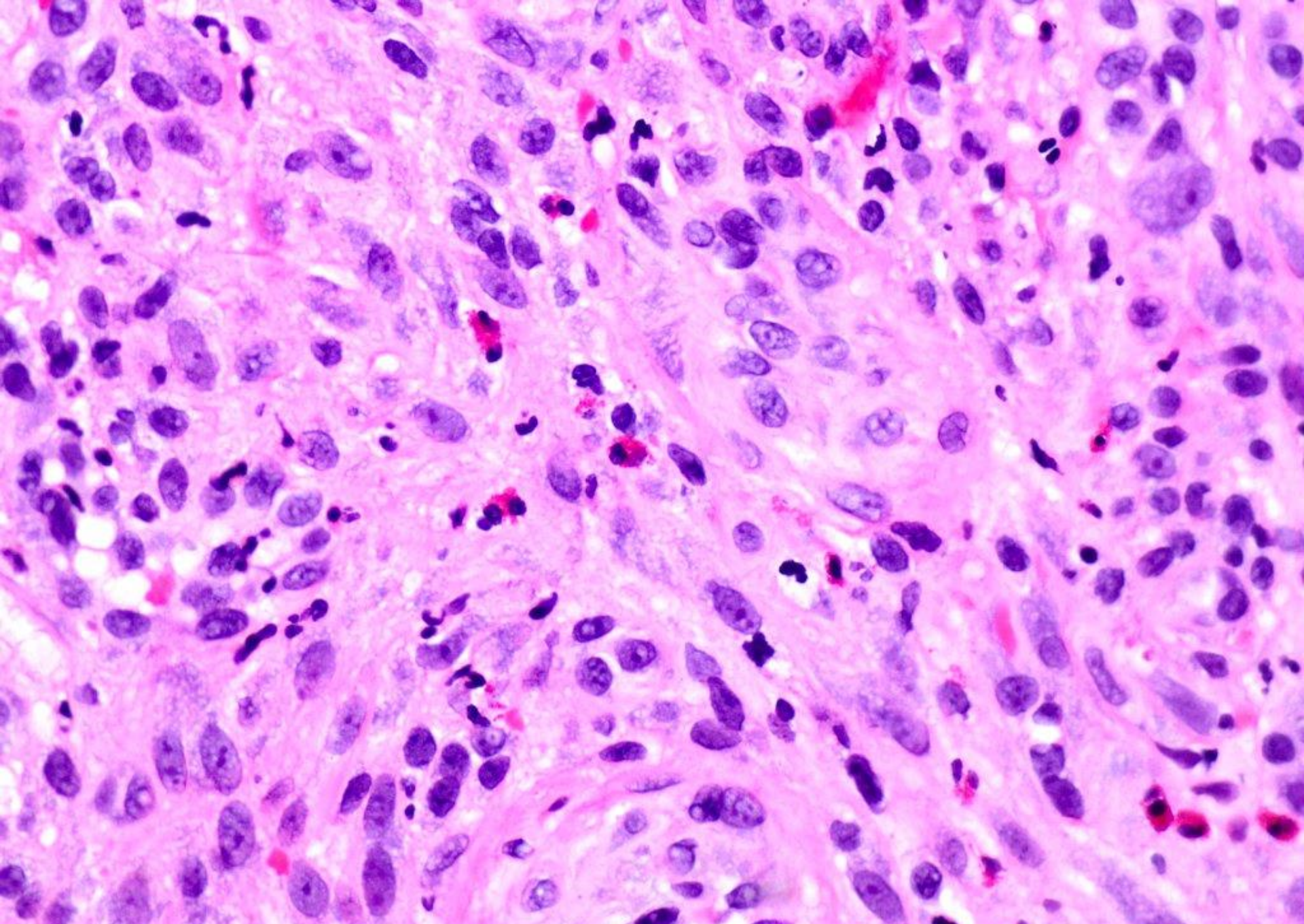
ulcerated peripheral giant cell granuloma











ulcerated pyogenic granuloma (with stromal eosinophilia)